

Access control system VF VeriFlexx

for 24/7 access with EC, credit and RFID cards



The universal access control system **VF VeriFlexx** is suitable for 24/7 access control with EC, VISA, Mastercard, American Express and RFID cards. Reading virtual cards (Google Pay and Apple Pay) as well as customer cards (13.56 MHz, various Mifare versions) is also possible. Using the remote controller box with integrated power supply the system can be managed. With the associated software, all functions of the system can be configured and read.

Application areas

- Access control with EC, credit and RFID cards on doors, barriers or turnstiles
- Access control for 24/7 shops, self-service supermarkets, 24/7 farm shops, 24/7 fitness/solar studios, 24/7 self storage, 24/7 coworking spaces, 24/7 parking spaces, hotels, bank foyers, libraries, petrol stations, visitor access etc.

Product features

- Flexible verification with EC, VISA, Mastercard, American Express and RFID cards
- Reading of virtual cards from Google Pay and Apple Pay
- Programming of customer cards 13,56 MHz (various Mifare Versions) possible
- Data verification according to specifications in the controller box
- Remote controller box with internal power supply, relays and interfaces, ports for indoor installation, no access from the outside
- Up to 3 relays (adjustable time for door openers/motor locks) and 3 opto inputs
- With tamper contact - when removing the device from the wall the system is switched off
- Incl. software for configuring the controller box

Readable with our system



- Programming of the system via USB or LAN
- Stand-alone operation after initial configuration
- RTC with automatic calendar (summer/winter switching), 40 additional holidays, 60 special days, 6 switching times per day programmable
- Permanent free entry possible
- Connecting a video safe possible

Technical data controller box

| | |
|------------------------|---|
| Dimensions | Width: 195 mm Height: 320 mm Depth: 70 mm |
| Power supply | 100-240 V AC 1,0 A internal power supply |
| Power switch | illuminated |
| Number of cable glands | 3 |
| Installation location | only suitable for indoor installation |

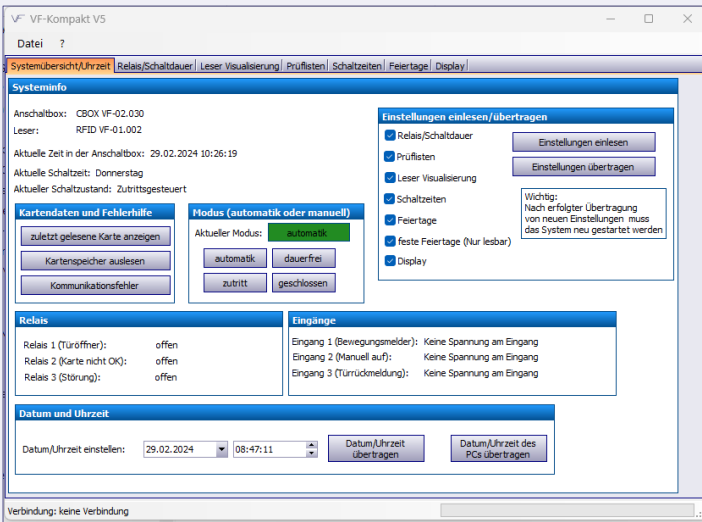
Technical data card reader

| | |
|-------------------------------------|---|
| Dimensions | Width: 164 mm Height: 160 mm Depth: 68,4 mm |
| Housing type | housing for surface mounting |
| Material housing | ABS, color black, similar to RAL 9005 |
| Power supply | via controller box |
| Max. cable length to controller box | 100 m |
| Interfaces | RS 422 |
| Protection class | IP 65 |
| Cable entry | either from below or behind |
| Mounting | via Vesa standard wall mount 75x75 mm (removable) or directly over a standard 60 mm switch box; Fixation via screw connection to the wall bracket |

Software functions

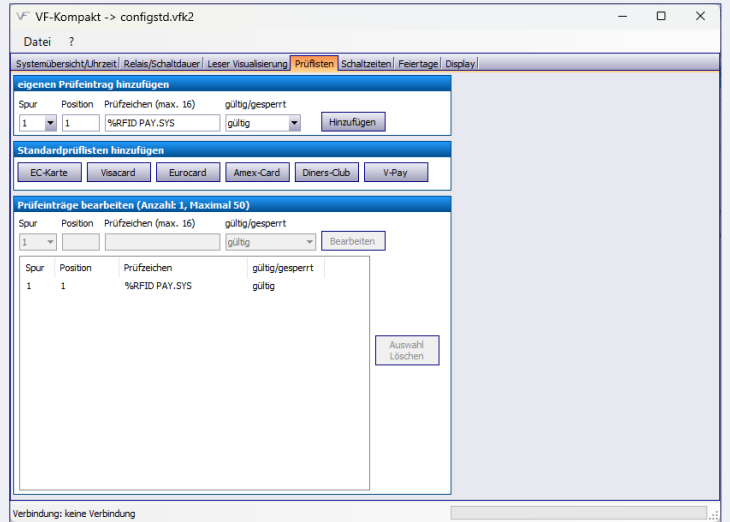
Home screen

Overview of the current status of the system, display of switching states of the relays and inputs, system mode, date, time, firmware versions, etc.



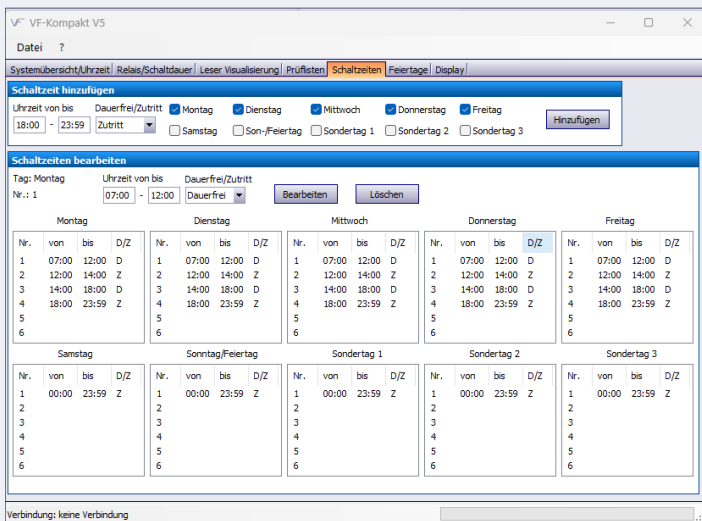
Checklists

Reading and editing of the set test parameters, specifying test groups for different types of cards, allocation of the data to be checked analogous to previous magnetic card systems. Currently, only one payment feature is being checked.



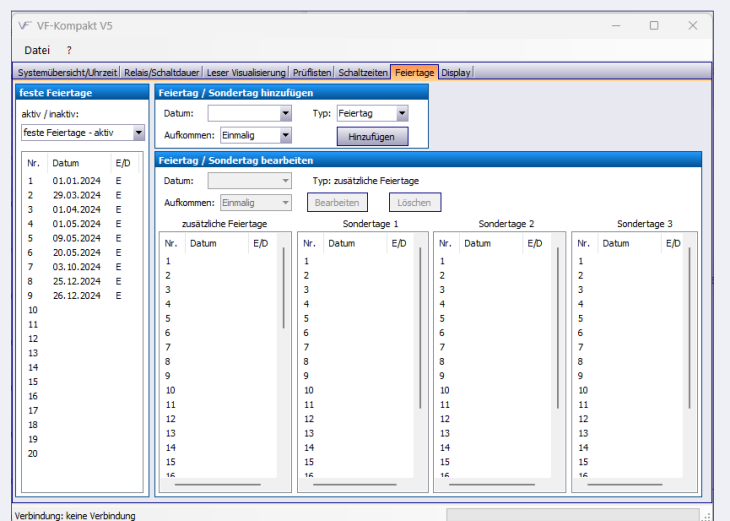
Switching times

Setting the access times for the system, permanent opening times possible. Setting for individual weekdays, holidays, special days. Programming for Monday to Friday, for example, possible with one entry. The system is closed for undefined periods of time.



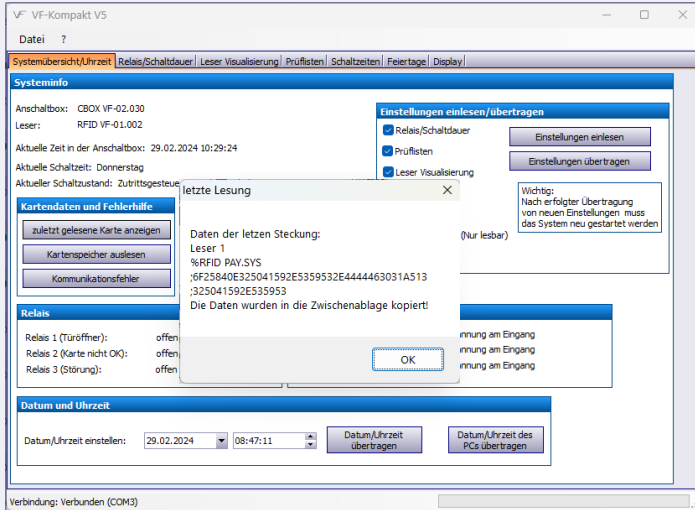
Public holidays

Automatic holiday calendar for Germany, adjustable holidays and special days.



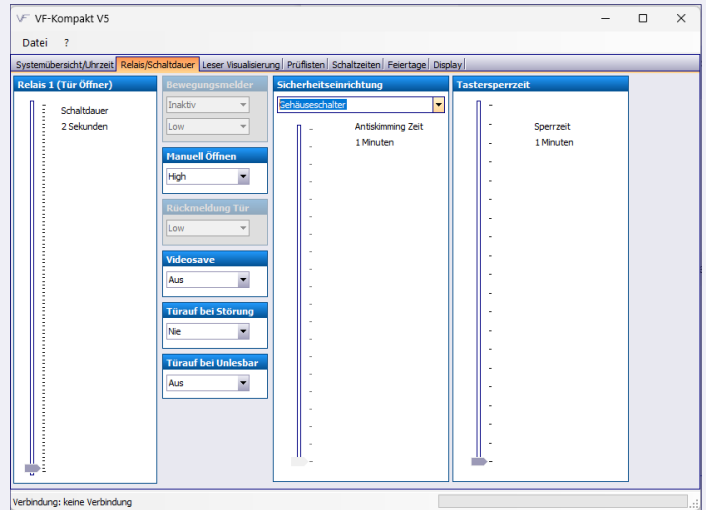
Last card read

Display of the data of the last event. The data can be read and saved via the clipboard.



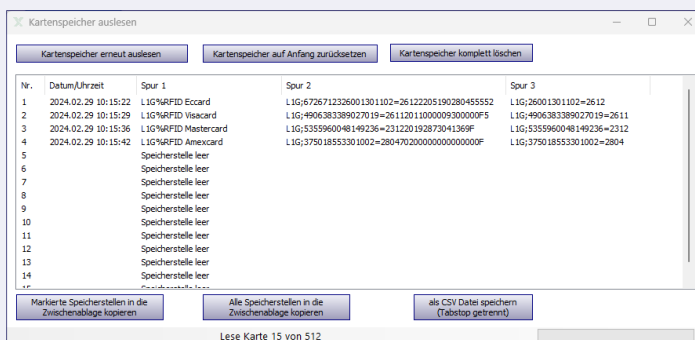
Door opener and security

Setting the relay times for the door opener, settings for security switches, tampering.



Card storage

Ring memory for the last 512 events, such as system messages, cards read. Export of the memory to a CSV file possible.



VF-Systems GmbH

Access control systems

Card readers

Card dispensers

RFID readers

Special constructions

Am Pulverhäuschen 4

59557 Lippstadt / Germany

Phone: +49 (0) 2941-93385-0

Fax: +49 (0) 2941-93385-120

E-Mail: sales@vfsystems.de

www.vfsystems.de